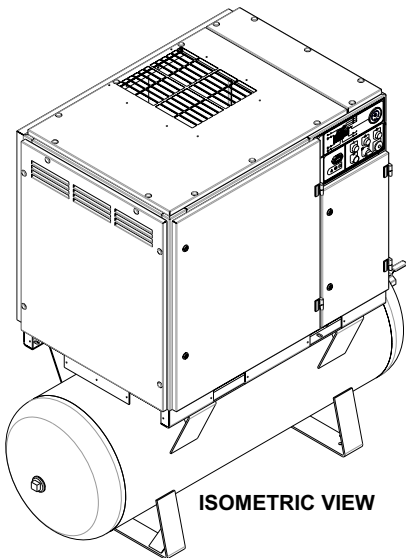


NOTES:

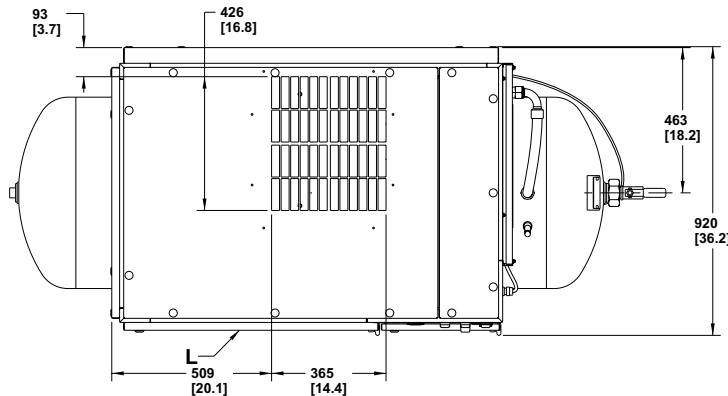
- APPROXIMATE STANDARD PACKAGE WEIGHTS: 15 kW - 730 Kg (1609 lbs.)  
18.5 kW - 753 Kg (1660 lbs.)  
22 kW - 761 Kg (1678 lbs.)  
APPROXIMATE DRYER PACKAGE WEIGHTS: 15 kW - 832 Kg (1834 lbs.)  
18.5 kW - 864 Kg (1905 lbs.)  
22 kW - 872 Kg (1922 lbs.)
- COOLANT (LUBRICANT) FILL QUANTITY (APPROXIMATE) 13 LITRES.
- RECOMMENDED CLEARANCE IN FRONT OF CONTROL PANEL DOOR 1067mm (42 inches) OR MINIMUM AS REQUIRED BY THE LATEST NATIONAL ELECTRICAL CODES OR APPLICABLE LOCAL CODES.
- RECOMMENDED CLEARANCES ON TWO SIDES (LEFT AND RIGHT SIDE) 914mm (36 inches).
- MINIMUM RECOMMENDED CLEARANCE FOR THE REAR OF THE COMPRESSOR IS TO BE 152mm (6 inches).
- MINIMUM RECOMMENDED COMPRESSOR TOP CLEARANCE FOR PACKAGE EXHAUST TO BE 914 mm (36 INCHES).
- EXTERNAL PIPING SHALL NOT EXERT ANY UNRESOLVED MOMENTS OR FORCES ON THE UNIT. USE PIPE SIZE AS LARGE OR LARGER AT DISCHARGE CONNECTION.
- THERE SHOULD BE NO PLASTIC OR PVC PIPING ATTACHED TO THIS UNIT OR USED FOR ANY LINES DOWN STREAM.
- ANY FIELD INSTALLED DUCTING TO AND FROM THE COMPRESSOR CANNOT ADD MORE THAN 12.7mm (0.5 INCHES) OF WATER TOTAL AIR RESISTANCE.
- DO NOT PIPE INTO A COMMON HEADER WITH A RECIPROCATING COMPRESSOR, UNLESS THE RECIPROCATING COMPRESSOR UTILIZES A DISCHARGE PULSATION DAMPENER.
- SIZING OF ELECTRICAL COMPONENTS NOT SUPPLIED BY INGERSOLL-RAND IS THE RESPONSIBILITY OF THE CUSTOMER AND SHOULD BE DONE IN ACCORDANCE WITH THE INFORMATION ON THE COMPRESSOR DATA PLATE AND NATIONAL AND LOCAL ELECTRICAL CODES.

KEY

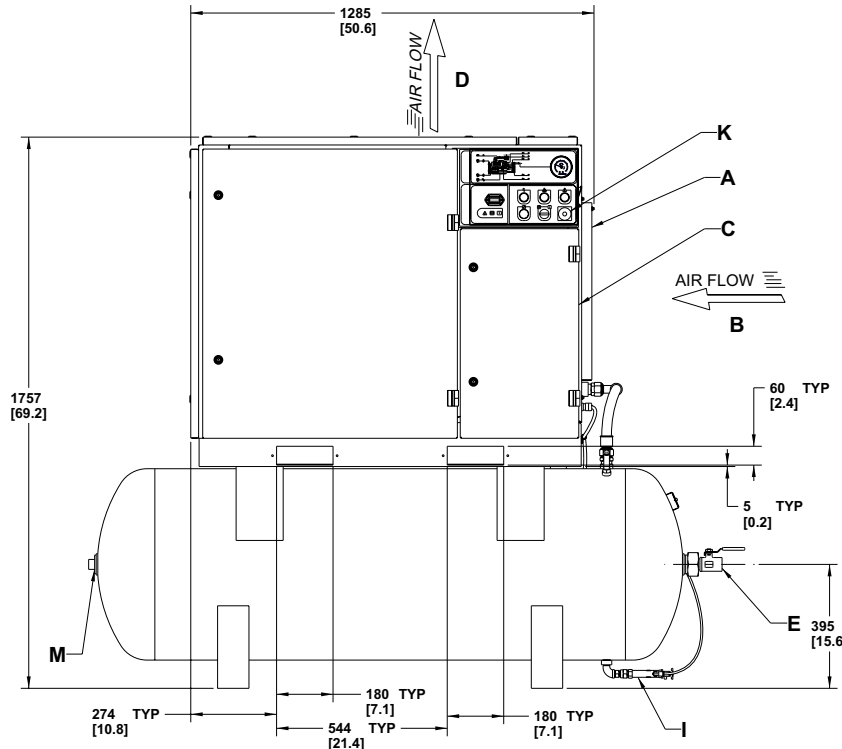
- A PRE FILTER
- B COMPRESSOR AIR INTAKE
- C STARTER BOX (NON COMBINATION STARTER)
- D COOLING AIR EXHAUST
- E 1.00 INCH BSPT AIR DISCHARGE
- F CUSTOMER POWER INLET
- G FORK LIFT OPENINGS
- H AIR RECEIVER (500 LITRES)
- I AUTOMATIC DRAIN VALVE
- J .25 INCH BSPT CONDENSATE DRAIN
- K EMERGENCY STOP BUTTON
- L PRIMARY COMPRESSOR SERVICE DOOR
- M INSPECTION PORT
- N DRYER AIR INLET
- O DRYER AIR EXHAUST
- P .25 INCH BSPT MOISTURE SEPARATOR DRAIN
- Q .25 INCH BSPT DRYER DRAIN
- R .25 INCH BSPT AIR FILTER DRAIN
- S 1.00 INCH NPT PLUG
- T FILTER RESTRICTION INDICATOR
- W DRYER ON/OFF SWITCH
- X DEW POINT INDICATOR
- Y MANUAL DRAIN VALVE



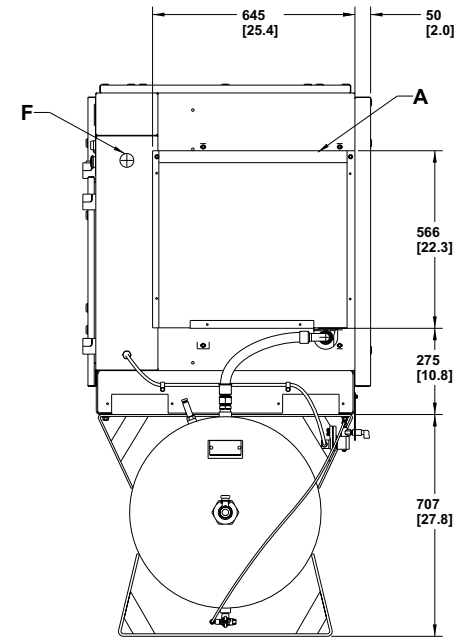
ISOMETRIC VIEW



TOP VIEW



FRONT VIEW



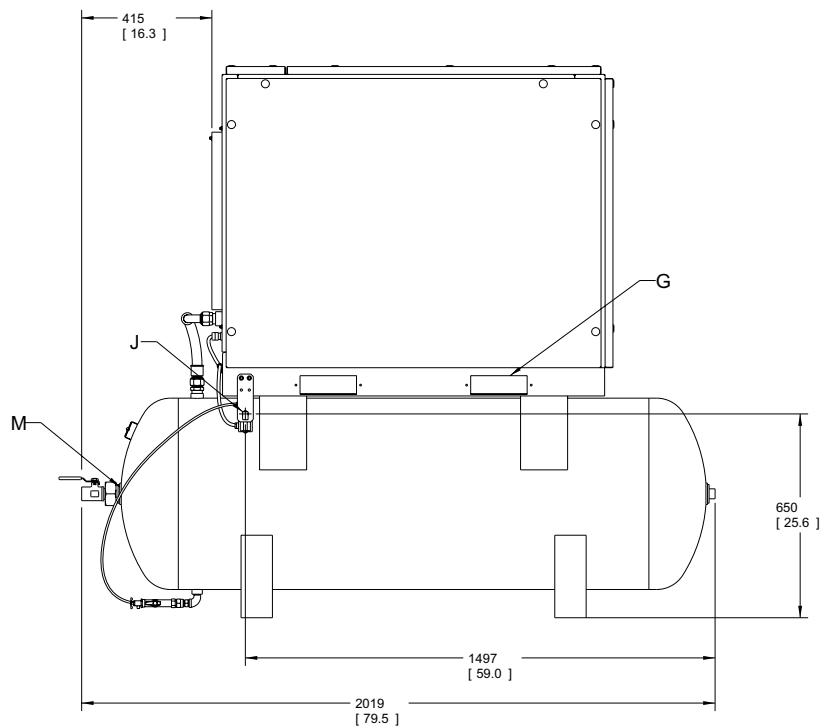
RIGHT VIEW

REVISIONS						
ZONE	REV	ECN	DESCRIPTION	DATE	APP.	
	A	01R00542	ORIGINAL RELEASE	2001OCT23	J.HUNT	J.MARKSMALL G.PATTERSO
	B	02R00099	ADDED DRYER OPTION INFORMATION	2002FEB22	J.HUNT	M.STICKLAN
	C	02R00181	UPDATED VIEWS FOR NON-DRYER UNITS TO SHOW NEW HOSE FROM COOLER TO RECEIVER.	2002MAR25	J.HUNT	M.STICKLAN
3B-8	D	02R00389	MANUAL DRAIN VALVE WAS EDV	2002AUG01	G.CARLSON	M.STICKLAN
2D-3	E	76842	UPDATED DRYER PACKAGE HEIGHTS NOTE 10: 12.7MM (0.5 INCHES) WAS 6MM (.25 INCHES); UPDATED FORMAT	2007NOV12	S.DIETRICH	C.FRAZIER
1D8 1C3	F	76886	UPDATED ECN 76842 NOTE 9: 12.7MM (0.5 INCHES) WAS 6MM (.25 INCHES) ADDED MISSING LEADERS FOR KEYS K AND C MOVED NOTES AND KEY CHART TO SHEET 1	2007NOV20	W.SORAH	C.FRAZIER

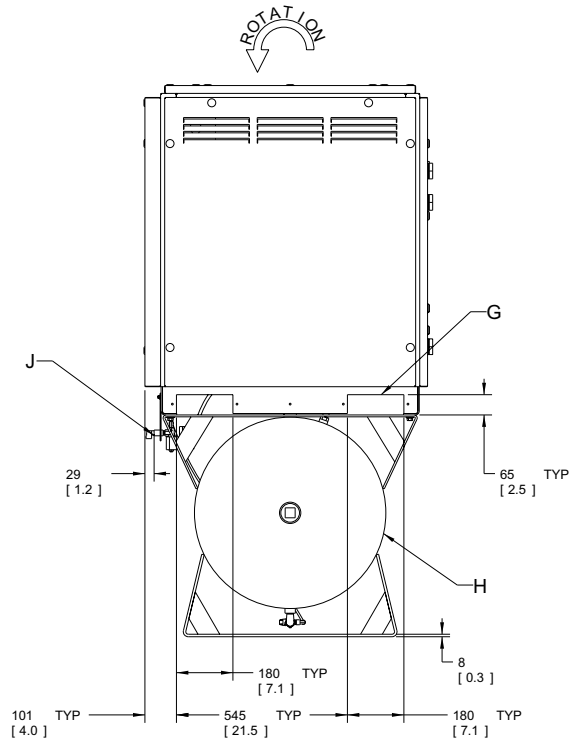
<b>GENERAL ARRANGEMENT TOLERANCES</b>	WARNING: THE EXPORT OR REEXPORT OF THIS DRAWING OR A PRODUCT PRODUCED BY THIS DRAWING IS SUBJECT TO U.S. EXPORT ADMINISTRATION REGULATIONS AND OTHER APPLICABLE GOVERNMENT RESTRICTIONS OR REGULATIONS.	DO NOT SCALE DRAWING DRAWING CONFORMS TO ASME Y14.5M - 1994
ALL DIMENSIONS ARE IN MILLIMETERS [INCHES (IF SHOWN)]	PROPRIETARY NOTICE THIS DRAWING CONTAINS CONFIDENTIAL AND TRADE SECRET INFORMATION IS THE PROPERTY OF INGERSOLL-RAND CO. AND IS GIVEN TO THE RECEIVER IN CONFIDENCE. THE RECEIVER BY RECEIPT AND RETENTION OF THE DRAWING ACCEPTS THE DRAWING IN CONFIDENCE AND AGREES THAT, EXCEPT AS AUTHORIZED IN WRITING BY INGERSOLL-RAND CO. IT WILL (1) NOT USE THE DRAWING OR ANY COPY THEREOF OR THE CONFIDENTIAL OR TRADE SECRET INFORMATION THEREIN; (2) NOT COPY THE DRAWING; (3) NOT DISCLOSE TO OTHERS EITHER THE DRAWING OR THE CONFIDENTIAL OR TRADE SECRET INFORMATION THEREIN; AND (4) UPON COMPLETION OF THE NEED TO RETAIN THE DRAWING, OR UPON DEMAND, RETURN THE DRAWING, ALL COPIES THEREOF, AND ALL MATERIAL COPIED THEREFROM.	CAD GENERATED DRAWING, NO MANUAL REVISIONS ALLOWED
UNSPECIFIED TOLERANCES:		UNLESS OTHERWISE SPECIFIED: - REMOVE ALL BURRS AND SHARP CORNERS - WELD SYMBOLS TO BE IN ACCORDANCE WITH ANSIAAWS A2.4
WHOLE ±13.0[.50] X ±6.0[.25] ANGLES ±.5°		COPYRIGHT © 2007 INGERSOLL-RAND COMPANY ALL RIGHTS RESERVED
Ingersoll-Rand Industrial Technologies		

THIRD ANGLE PROJECTION	DATE
DRAWN J.HUNT	2001OCT23
CHECKED G.HALLMAN	2001OCT24
APPROVED S.SHARP M.STICKLAN	2001OCT24 2001OCT24

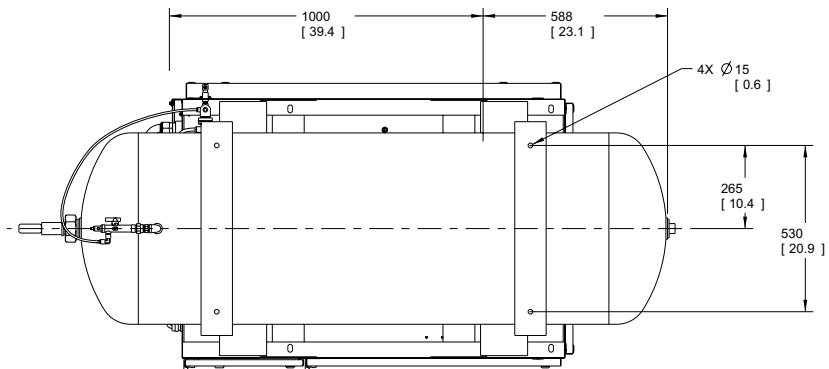
<b>GENERAL ARRANGEMENT TANK MOUNTED (500 LITRES)</b>	
SIZE <b>A1</b>	SCALE 0.0 0.13
DWG NO. <b>22063341</b>	SHEET <b>F</b>
PEGASUS	
1 OF 3	



REAR VIEW



LEFT VIEW

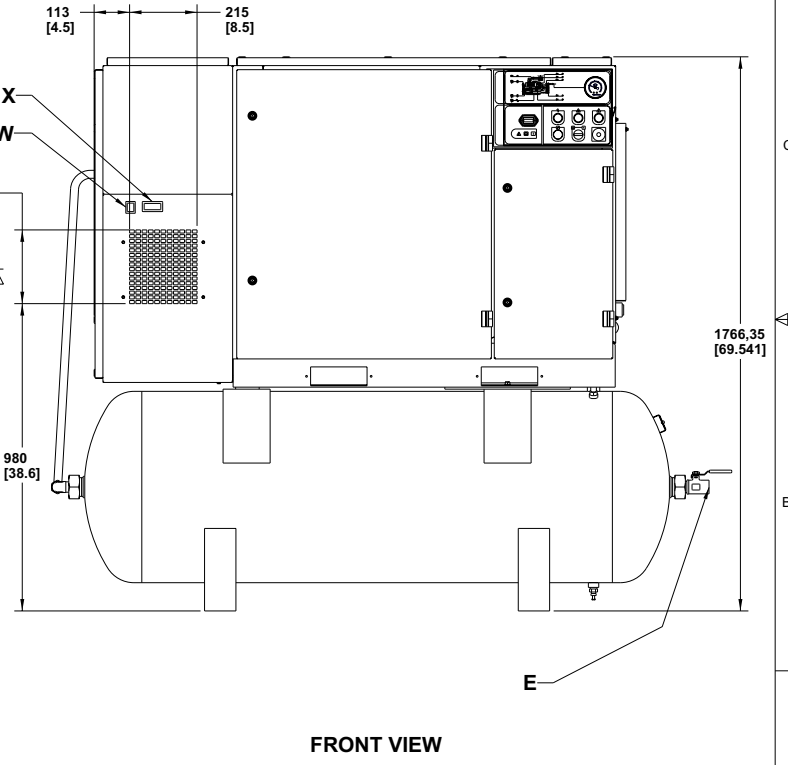
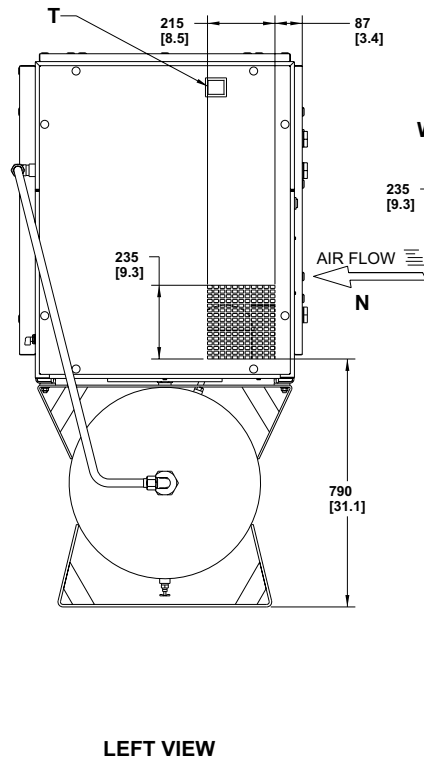
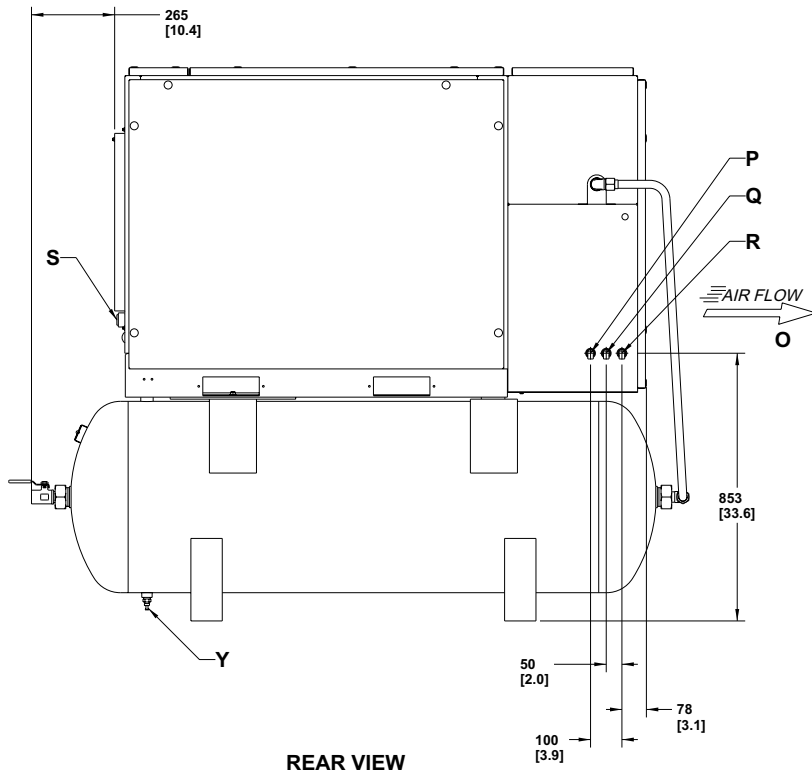


BOTTOM VIEW

APPROVED FOR :  
 I-R ORDER NO. :  
 CUSTOMER :  
 CUSTOMER ORDER NO :  
 PER :  
 DATE :

MODEL :	JOB :	SPEC :
SPEED :	ITEM :	CONTRACTOR :
DISCHARGE PRESSURE RATING :	ARCH. ENGR :	
ACTUAL DELIVERY :	MOTOR POWER :	MOTOR ENCL :
STARTER TYPE :	MOTOR VOLTS :	PHASE : Hz :
<small>PROPRIETARY NOTICE</small> <b>GENERAL ARRANGEMENT</b> <b>TANK MOUNTED (500 LITRES)</b>		
SIZE: A1	DATE NO: 22063341	REV: F
SCALE: 0.13	SHEET: 1	TOTAL: 2 OF 3

# DRYER OPTION INFORMATION



<small>PROPRIETARY NOTICE</small> THIS DRAWING CONTAINS CONFIDENTIAL AND TRADE SECRET INFORMATION IS THE PROPERTY OF AGGREGAL RANCO CO. AND IS LOANED TO THE RECIPIENT FOR CONSTRUCTION. THE RECIPIENT IS NOT TO REPRODUCE OR DISSEMINATE THIS DRAWING OR ANY INFORMATION CONTAINED THEREIN WITHOUT THE WRITTEN PERMISSION OF AGGREGAL RANCO CO. IT SHALL BE RETURNED TO THE COMPANY IMMEDIATELY UPON COMPLETION OF THE PROJECT OR AS OTHERWISE SPECIFIED BY THE COMPANY. ALL INFORMATION CONTAINED HEREIN IS UNCLASSIFIED EXCEPT WHERE SHOWN OTHERWISE.		<b>TITLE</b> <b>GENERAL ARRANGEMENT</b> <b>TANK MOUNTED (500 LITRES)</b>	
<b>SIZE</b> <b>A1</b>	<b>DATE</b> <b>22063341</b>	<b>REV</b> <b>F</b>	
<b>SCALE</b> <b>0.13</b>	<b>SHEET</b> <b>3 OF 3</b>		